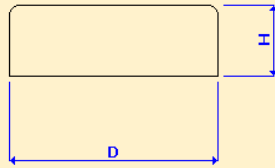
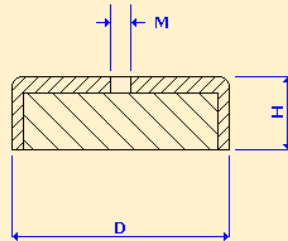


### ASSEMBLAGGI MAGNETICI IN NdFeB A CAPSULA CHIUSA



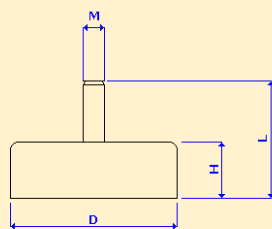
Codice	Dimensioni (mm)		Peso (g)	Forza ( N)
	D	H		
<b>NPF001</b>	6	4,5	1	5
<b>NPF002</b>	8	4,5	1,5	11
<b>NPF003</b>	10	4,5	2,5	20
<b>NPF004</b>	13	4,5	4,5	40
<b>NPF005</b>	16	4,5	6,5	60
<b>NPF006</b>	20	6	15	90
<b>NPF007</b>	25	7	22	150
<b>NPF008</b>	32	7	40	220

### ASSEMBLAGGI MAGNETICI IN NdFeB CON FORO FILETTATO



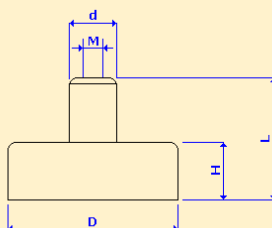
Codice	Dimensioni (mm)			Weight (g)	Force ( N)
	D	H	M		
<b>NPTH001</b>	6	6	3		
<b>NPTH002</b>	8	5	3		
<b>NPTH003</b>	12	8	4		
<b>NPTH004</b>	19	8	4		
<b>NPTH005</b>	25	8	5		
<b>NPTH006</b>	27	6,5	6		
<b>NPTH007</b>	28	20	6		
<b>NPTH008</b>	38	10	6		

### ASSEMBLAGGI MAGNETICI IN NdFeB CON GAMBO FILETTATO MASCHIO



Codice	Dimensioni (mm)				Peso (g)	Forza ( N)
	D	H	L	M		
<b>NPTE001</b>	10	4,5	12,5	4	3	25
<b>NPTE002</b>	13	4,5	12,5	5	5	60
<b>NPTE003</b>	16	4,5	12,5	6	7,5	95
<b>NPTE004</b>	20	6	16	6	16	140
<b>NPTE005</b>	25	7	17	6	25	200
<b>NPTE006</b>	32	7	17	6	48	350

### ASSEMBLAGGI MAGNETICI IN NdFeB CON GAMBO FILETTATO FEMMINA



Codice	Dimensioni (mm)					Peso (g)	Forza ( N)
	D	H	L	d	M		
<b>NPTB001</b>	8	4,5	11,5	6	3	2	13
<b>NPTB002</b>	10	4,5	11,5	6	3	3	25
<b>NPTB003</b>	13	4,5	11,5	6	3	5	60
<b>NPTB004</b>	16	4,5	11,5	6	4	7,5	95
<b>NPTB005</b>	20	6	13	8	4	16	140
<b>NPTB006</b>	25	7	14	8	4	25	200
<b>NPTB007</b>	32	7	15,5	10	5	48	350