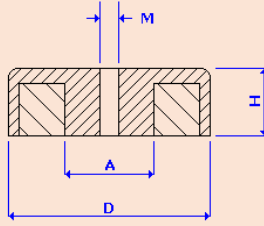
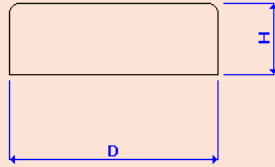


ASSEMBLAGGI IN FERRITE CON FORO FILETTATO



| Codice | Dimensioni (mm) | | | | Peso (g) | Forza (N) |
|----------------|-----------------|----|----|----|----------|-----------|
| | D | H | M | A | | |
| FPTH001 | 50 | 10 | 6 | 18 | 105 | 170 |
| FPTH002 | 63 | 14 | 8 | 20 | 235 | 350 |
| FPTH003 | 80 | 18 | 10 | 15 | 490 | 550 |
| FPTH004 | 90 | 13 | 10 | 32 | 350 | 380 |
| FPTH005 | 90 | 18 | 10 | 32 | 450 | 420 |

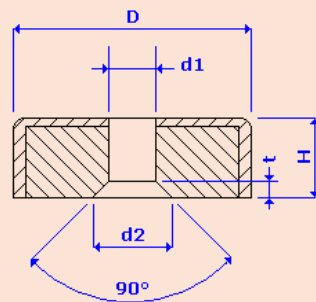
ASSEMBLAGGI IN FERRITE A CAPSULA CHIUSA



| Codice | Dimensioni (mm) | | Peso (g) | Forza (N) |
|---------------|-----------------|-----|----------|-----------|
| | D | H | | |
| FPF001 | 10 | 4,5 | 2 | 4 |
| FPF002 | 13 | 4,5 | 3 | 10 |
| FPF003 | 16 | 4,5 | 4,5 | 18 |
| FPF004 | 20 | 6 | 10 | 30 |
| FPF005 | 25 | 7 | 19 | 40 |
| FPF006 | 32 | 7 | 30 | 80 |
| FPF007 | 36 | 8 | 40 | 100 |

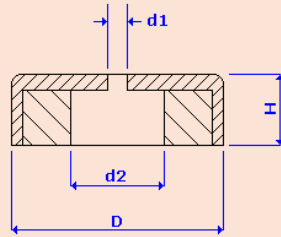
| | | | | |
|---------------|-----|------|------|------|
| FPF008 | 40 | 8 | 55 | 125 |
| FPF009 | 47 | 9 | 80 | 180 |
| FPF010 | 50 | 10 | 100 | 220 |
| FPF011 | 57 | 10,5 | 140 | 280 |
| FPF012 | 63 | 14 | 230 | 350 |
| FPF013 | 80 | 18 | 485 | 600 |
| FPF014 | 100 | 22 | 900 | 900 |
| FPF015 | 125 | 26 | 1680 | 1300 |

ASSEMBLAGGI IN FERRITE CON FORO SVASATO



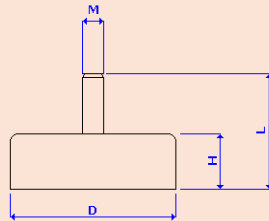
| Code | Dimension (mm) | | | | | Weight (g) | Force (N) |
|----------------|-------------------|-----|-----|------|-----|---------------|--------------|
| | D | H | d1 | d2 | t | | |
| FPCH001 | 16 | 4,5 | 3,5 | 6,5 | 1,6 | 4 | 14 |
| FPCH002 | 20 | 6 | 4,2 | 8,6 | 2,1 | 9 | 27 |
| FPCH003 | 25 | 7 | 5,5 | 10,4 | 2,5 | 16 | 36 |
| FPCH004 | 32 | 7 | 5,5 | 10,4 | 2,5 | 27 | 72 |
| FPCH005 | 40 | 8 | 5,5 | 10,4 | 2,5 | 53 | 90 |

ASSEMBLAGGI IN FERRITE CON FORO PASSANTE A DOPPIO DIAMETRO



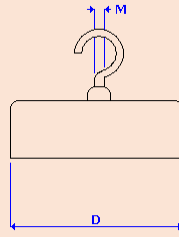
| Codice | Dimensioni (mm) | | | | Peso (g) | Forza (N) |
|---------|-----------------|----|------|------|----------|-----------|
| | D | H | d1 | d2 | | |
| FPPH001 | 50 | 10 | 8,5 | 22 | 90 | 180 |
| FPPH002 | 63 | 14 | 6,5 | 24 | 195 | 290 |
| FPPH003 | 80 | 18 | 6,5 | 11,5 | 480 | 540 |
| FPPH004 | 83 | 18 | 10,5 | 32 | 450 | 600 |
| FPPH005 | 100 | 22 | 10,5 | 34 | 820 | 680 |

ASSEMBLAGGI IN FERRITE CON GAMBO FILETTATO MASCHIO



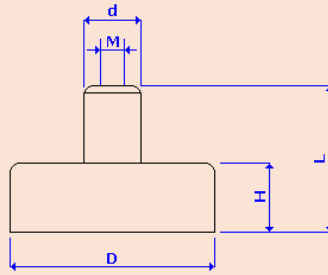
| Codice | Dimensioni (mm) | | | | Peso (g) | Forza (N) |
|---------|-----------------|-----|------|---|----------|-----------|
| | D | H | L | M | | |
| FPTE001 | 10 | 4,5 | 11,5 | 3 | 3 | 4 |
| FPTE002 | 13 | 4,5 | 11,5 | 3 | 5 | 10 |
| FPTE003 | 16 | 4,5 | 11,5 | 3 | 6 | 18 |
| FPTE004 | 20 | 6 | 13 | 3 | 11 | 30 |
| FPTE005 | 25 | 7 | 15 | 4 | 22 | 40 |
| FPTE006 | 32 | 7 | 15 | 4 | 32 | 80 |

ASSEMBLAGGI IN FERRITE CON GANCIO



| Codice | Dimensioni (mm) | | Forza (N) |
|---------|-----------------|---|-------------|
| | D | M | |
| FPWH001 | 16 | 3 | 18 |
| FPWH002 | 20 | 3 | 30 |
| FPWH003 | 25 | 4 | 40 |
| FPWH004 | 32 | 4 | 80 |
| FPWH005 | 36 | 4 | 100 |
| FPWH006 | 40 | 5 | 125 |
| FPWH007 | 47 | 4 | 180 |
| FPWH008 | 50 | 6 | 220 |
| FPWH009 | 57 | 4 | 280 |
| FPWH010 | 63 | 8 | 350 |

ASSEMBLAGGI IN FERRITE CON GAMBO FILETTATO INTERNO



| Code | Dimension (mm) | | | | | Weight (g) | Force (N) |
|---------|-------------------|------|------|----|----|---------------|--------------|
| | D | H | L | d | M | | |
| FPTB001 | 10 | 4,5 | 11,5 | 6 | 3 | 3 | 4 |
| FPTB002 | 13 | 4,5 | 11,5 | 6 | 3 | 5 | 10 |
| FPTB003 | 16 | 4,5 | 11,5 | 6 | 3 | 6 | 18 |
| FPTB004 | 20 | 6 | 13 | 6 | 3 | 11 | 30 |
| FPTB005 | 25 | 7 | 15 | 8 | 4 | 22 | 40 |
| FPTB006 | 32 | 7 | 15 | 8 | 4 | 32 | 80 |
| FPTB007 | 36 | 8 | 16 | 8 | 4 | 45 | 100 |
| FPTB008 | 40 | 8 | 16,5 | 8 | 4 | 60 | 125 |
| FPTB009 | 40 | 8 | 18 | 10 | 5 | 60 | 125 |
| FPTB010 | 47 | 9 | 17 | 8 | 4 | 90 | 180 |
| FPTB011 | 50 | 10 | 18,5 | 8 | 4 | 110 | 220 |
| FPTB012 | 50 | 10 | 22 | 12 | 6 | 110 | 220 |
| FPTB013 | 57 | 10,5 | 18,5 | 8 | 4 | 145 | 280 |
| FPTB014 | 63 | 14 | 30 | 15 | 8 | 240 | 350 |
| FPTB015 | 80 | 18 | 34 | 20 | 10 | 520 | 600 |
| FPTB016 | 90 | 20 | 40 | 22 | 10 | 690 | 700 |
| FPTB017 | 100 | 22 | 43 | 22 | 12 | 940 | 900 |
| FPTB018 | 125 | 26 | 50 | 25 | 14 | 1720 | 1300 |